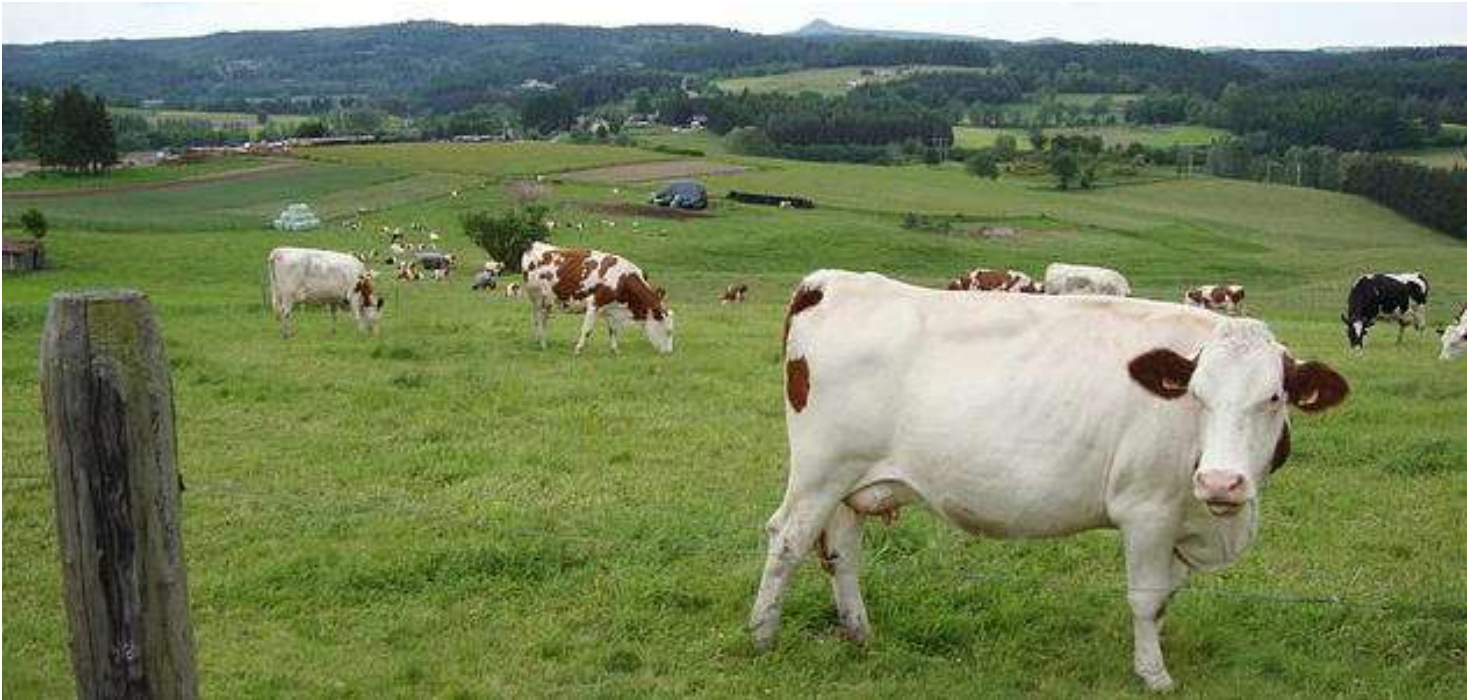




Wintersun Chemical



For the past two decades, Wintersun Chemical has become trusted source of Animal Feed/ Pet Care Ingredients

Why Wintersun?

- DEA certified
- NACD Verified
- Sources globally
- Fast and excellent performance in Customer Service, On Time Delivery, Quality and Order fill-rate
- Capable of FTL/LTL, Mixed load, Hazardous/Non-hazardous shipment
- Broad based product Line(Liquid/Dry; Organic/Inorganic; Commodity/Specialty)
- Stock Locally and Ship immediately
- Repack or OEM per your requirement
- Technical Data Sheet and Packing information are available in our website
- Experienced Staff in United States and overseas

Since 2001, **Wintersun has been a premier Animal Feed/ Pet Care Ingredients supplier** distributing high quality ingredients to businesses around the world. Wintersun is located in Ontario, California with a 70,000 square feet warehouse stocked full of ingredients ready for shipment. **Wintersun is proud member of National Association of Chemical Distributors (NACD)** and committed to consistent and reliable source of ingredients **at competitive price with exceptional customer service**. Call **Wintersun's customer service** for quotations and information at **(800) 930-1688** or email us at sales@wintersunchem.com

Wintersun Chemical 1250 E. Belmont St. Ontario CA 91761 USA
<http://wintersunchem.com> sales@wintersunchem.com
Phone: (800) 930-1688 Fax: (909) 947-1788



Animal Feed/Pet Care Ingredients

Aluminum Sulfate	Phosphoric Acid 75% FCC Grade
Ammonium Bicarbonate Food Grade	Potassium Benzoate, Food Grade
Ammonium Chloride	Potassium Bicarbonate, Food Grade
Ammonium Hydroxide	Potassium Chloride
Ascorbic Acid (L-Ascorbic Acid), USP	Potassium Hydroxide (Caustic Potash)
Borax 10 Mol	Potassium Sodium Tartrate FCC
Borax 5 Mol	Potassium Sorbate, Food Grade
Boric Acid - NF	Propyl Paraben, Food Grade
Boric Acid - Technical Grade	Propylene Glycol, USP
Butylated Hydroxy-Toluene FCC (BHT)	Sodium Ascorbate
Calcium Carbonate Food Grade & NSF	Sodium Benzoate FCC/USP Extruded
Calcium Chloride Anhydrous	Sodium Benzoate FCC/USP Powder
Calcium Hydroxide	Sodium Bicarbonate, USP & Industrial
Cetyl Alcohol, NF Grade	Sodium Bisulfate Globular Food Grade
Chitosan 90% High Density	Sodium Bisulfite Photo/ Food Grade
Citric Acid Anhydrous FCC/ USP	Sodium Bisulfite Solution
Copper Sulfate Pentahydrate	Sodium Bromide
Corn Starch (Starch), Food Grade	Sodium Carbonate (Soda Ash)
Cyanocobalamin (Vitamin B-12) USP	Sodium Chloride (Salt)
Denatured Alcohol Specially (Ethanol)	Sodium Citrate Dihydrate
Disodium Phosphate Anhydrate, FCC	Sodium Erythorbate FCC
Ferrous Gluconate	Sodium Gluconate
Ferrous Sulfate Heptahydrate FCC	Sodium Hexametaphosphate (SHMP)
Ferrous Sulfate Heptahydrate Technical	Sodium Hydroxide (Caustic soda)
Ferrous Sulphate Monohydrate	Sodium Hypochlorite 12.5% (Bleach)
Glucono Delta Lactone	Sodium Lauryl Sulfate
Glycerin USP, Kosher	Sodium Metabisulfite FCC/Photo
Glycolic Acid 70% Solution Industrial	Sodium Saccharin, USP
Guar Gum Powder Kosher/ Food Grade	Sodium Sulfite Anhydrous
Hydrochloric Acid (Muriatic Acid)	Sodium Thiosulfate Anhydrous
Isopropyl Alcohol (Isopropanol)	Sodium Thiosulfate Pentahydrate
Ketoconazole, USP Grade	Sodium Tripolyphosphate (STPP)
Lactic Acid 88% Food Grade	Sorbic Acid FCC
L-Cysteine HCL Monohydrate USP	Sorbitol Food Grade
L-Cysteine Hydrochloride Anhydrous	Sugar Refined, Food Grade, Kosher
L-Cystine, FCC Grade	Sulfuric Acid 98%
L-Leucine	Tannic Acid
Magnesium Sulfate Anhydrous	Tartaric Acid Food/USP Grade
Magnesium Sulfate Heptahydrate	Tetrapotassium Pyrophosphate (TKPP), NSF
Malic Acid FCC (DL-Malic Acid)	Tetrasodium EthyleneDiamineTetraAcetate (EDTA)
Manganese Carbonate	Tetrasodium Pyrophosphate (TSPP) Food Grade
Manganese Sulfate Monohydrate	Thymol Crystal FCC Grade
Methanol	Tricalcium Phosphate, Food Grade
Methyl Paraben, Food Grade	Trisodium Phosphate Dodecahydrate Technical
Methylsulfonyl Methane (MSM), USP	Urea 46%
Monosodium Glutamate (MSG) Food G	Xanthan Gum (FCC Grade, Kosher)
Monosodium Phosphate - MSP	Xylitol, Food Grade
Palmitic Acid	Zinc Sulfate Heptahydrate
Pectin	Zinc Sulfate Monohydrate